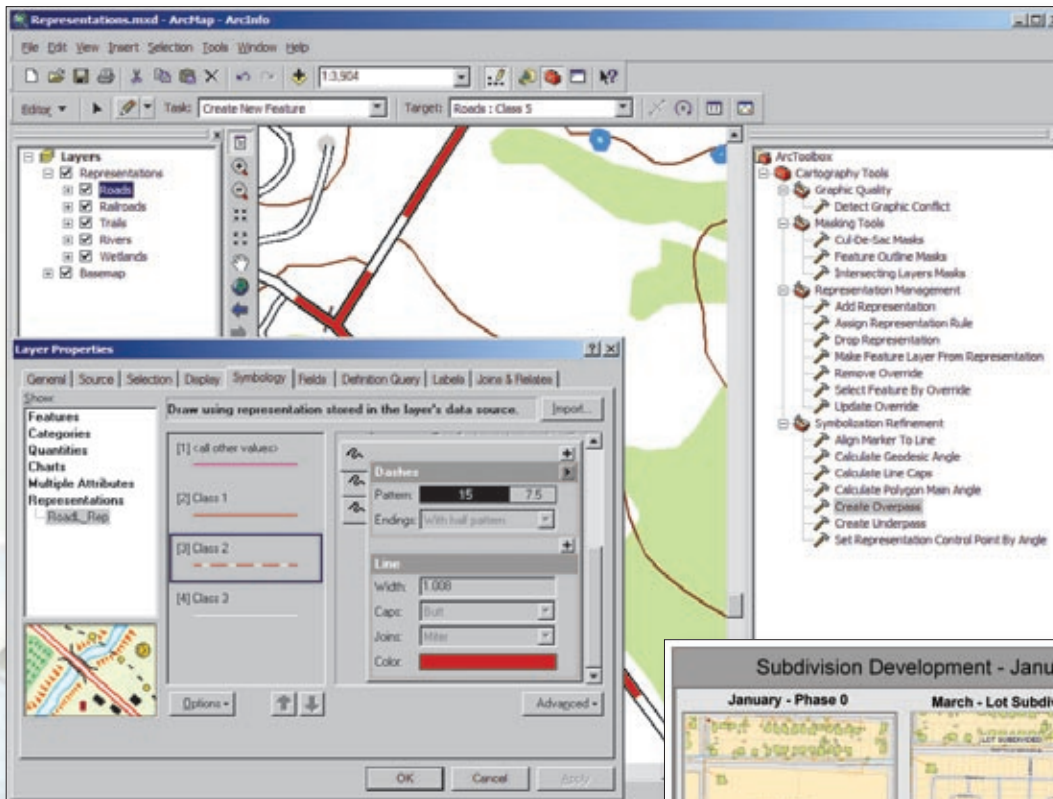


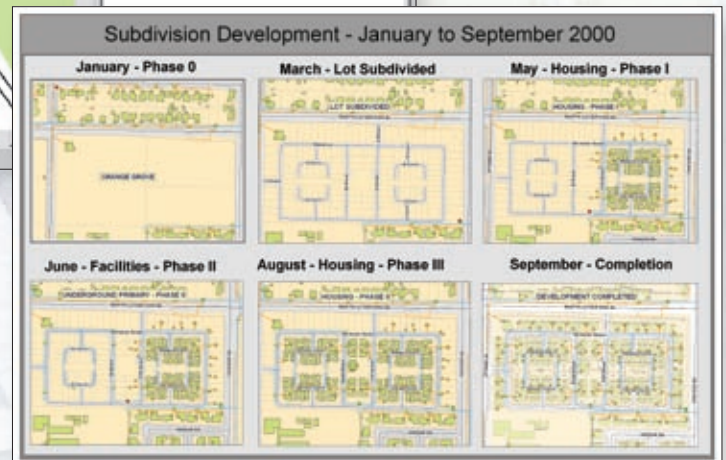
ArcGIS® 9.2

What's New in ArcGIS 9.2



ArcGIS 9.2 includes a new option for applying advanced symbology to feature layers.

ESRI focused on improved usability, stability, and performance as well as quality improvements and enhancements across all products.



Geodatabase archiving allows you to record and display changes over time.

General improvements include

- New keyboard shortcuts and mouse wheel support
- New and/or improved tools including a customizable Full Extent tool, a My Places tool, a Measure tool, and a Go to XY tool
- An integrated help system based on GIS concepts and content with improved index and search capability
- Much faster geocoding
- Support for ISO 19139 metadata and OGC GML Simple Features data
- Direct read of Microsoft® Excel® files
- New COGO editing/construction tools

Arc
ESRI GIS™

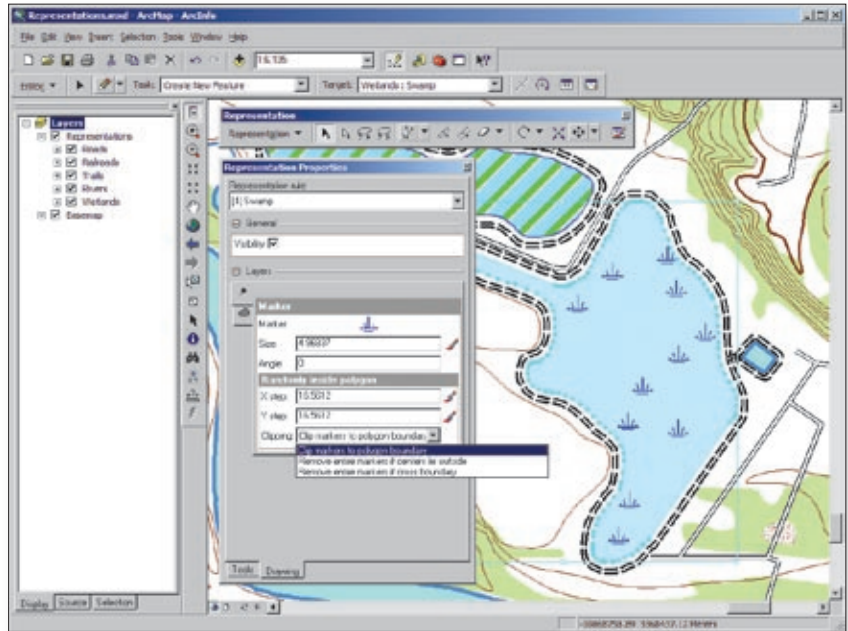


What's New in Desktop GIS

ArcGIS® 9.2 Desktop provides improved tools and interfaces, support for sophisticated cartographic design, advanced modeling tools for analysis, and enhanced CAD support.

Cartography

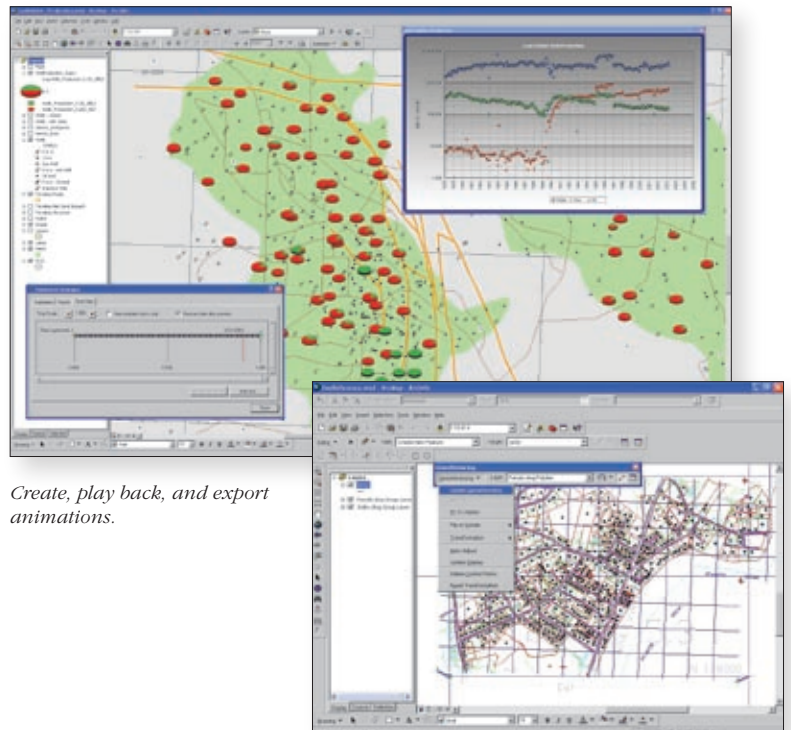
- Define advanced symbology rules.
- Dynamically apply cartographic attributes to features (smoothing, offset, etc.) without altering the source data.
- Store and manage symbology with features in the geodatabase.
- Use geoprocessing tools to find graphic conflicts and cul-de-sacs, generalize features, and automate workflows.
- Use advanced cartographic editing tools to perform final map finishing within ArcMap™.



Create and edit cartographic representations and symbols of features without modifying feature locations.

Visualization and Analysis

- Build models in ModelBuilder™ that iterate multiple times, allowing outputs to influence inputs at the next iteration. This allows for results that change over time or that are scenario specific.
- Visualize data with new graph tools including new graph types and graph and map color synchronization. Linking of data between the map and the graph is now supported.
- Analyze temporal change, patterns, and trends, including netCDF time-based and multidimensional data, using new geoprocessing tools.
- Use new animation tools to create, play back, and export animations and animated graphs.



Create, play back, and export animations.

CAD Support

- Improved CAD symbol support including matching colors, fills, and line symbols
- Improved annotation style matching and support for standard CAD annotation in ArcGIS
- Dynamic georeferencing of CAD files
- Support for extended CAD fields

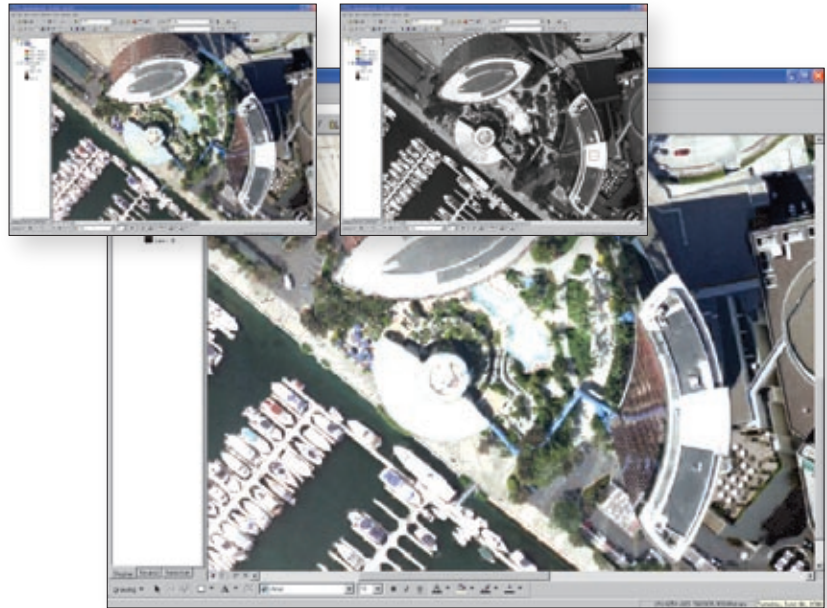
Move, rotate, and scale CAD layers using the mouse.

www.esri.com/arcgis

What's New in Data Management

At ArcGIS 9.2, geodatabases support additional data types, functionality, and workflows.

- Additions to the core geodatabase data model include high-precision coordinate storage, a new file geodatabase for personal data collections, and terrain support.
- Improved raster management includes additional format support, faster and more accurate reprojection, improved loading and display, and on-the-fly orthorectification and panchromatic sharpening.
- Improved transaction management includes nonversioned editing support using RDBMS short transactions, geodatabase replication between systems, and geodatabase archiving to record and display changes over time.



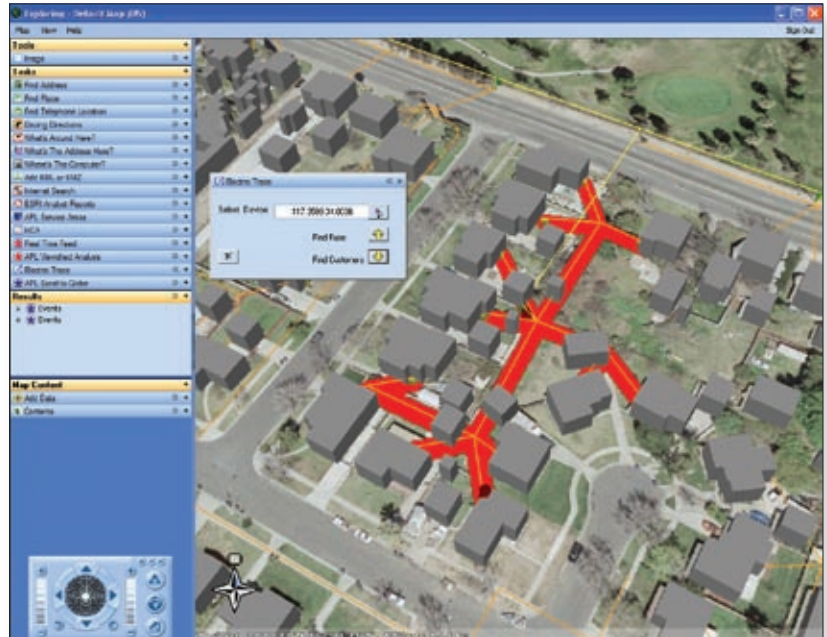
Perform on-the-fly panchromatic sharpening.

What's New in Server GIS

At ArcGIS 9.2, it is easier to publish maps, globes, and geoprocessing tasks and create, manage, and configure custom Web applications with ArcGIS Server.

ArcGIS Server

- Create maps, globes, and geoprocessing tasks on the desktop and easily publish them to the server for use on the Web, on the desktop, or on mobile devices.
- Take advantage of easy-to-use tools for the publication of information for GIS analysis (no programming required).
- Publish information using OGC WMS, and KML to multiple clients.
- Manage and configure your Web applications using Manager, an out-of-the-box, easy-to-use application.
- Create custom applications and services for desktop, mobile, Smart Client, and enterprise deployments using a rich Application Development Framework (ADF™) for both the Java™ and .NET environments.



Publish GIS functionality as Web applications, GIS services, or data services.



ESRI

380 New York Street
Redlands, California
92373-8100 USA

Phone: 909-793-2853
Fax: 909-793-5953
E-mail: info@esri.com

For more than 35 years, ESRI has been helping people make better decisions through management and analysis of geographic information. A full-service GIS company, ESRI offers a framework for implementing GIS technology and business logic in any organization from personal GIS on the desktop to enterprise-wide GIS servers (including the Web) and mobile devices. ESRI GIS solutions are flexible and can be customized to meet the needs of our users.

For More Information

1-800-GIS-XPRT (1-800-447-9778)

www.esri.com

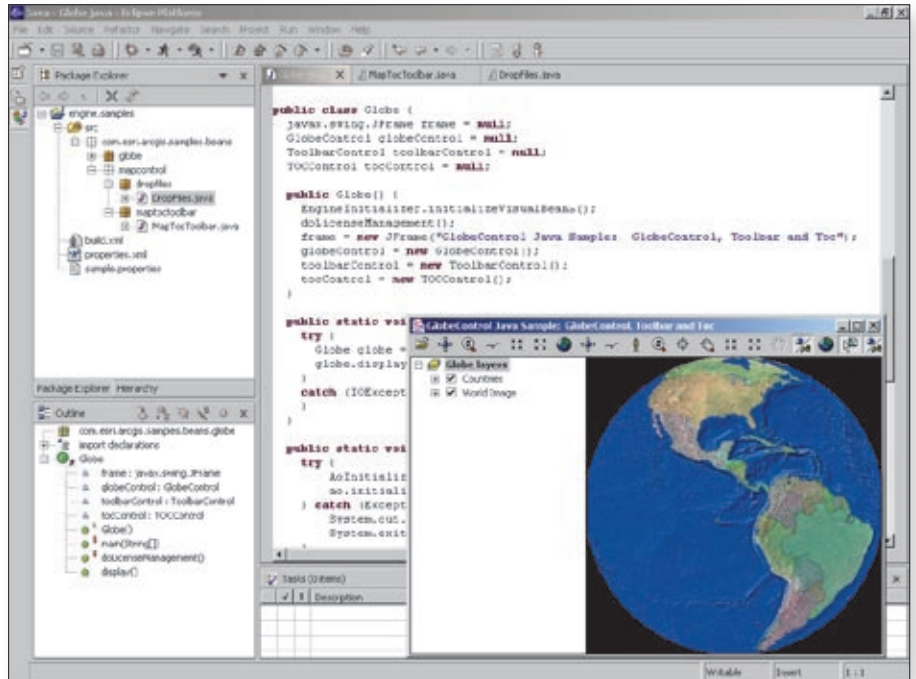
Locate an ESRI value-added reseller near you at

www.esri.com/resellers

Outside the United States, contact your local ESRI distributor. For the number of your distributor, call ESRI at 909-793-2853, ext. 1-1235, or visit our Web site at www.esri.com/distributors

What's New for Developers

At ArcGIS 9.2, developers will benefit from enhanced usability and new functionality including better documentation, new commands and tools, and the availability of additional extensions for ArcGIS Engine.



ArcGIS 9.2 Engine includes several developer components for creating 2D and 3D applications.

- New commands such as Add Data and Identify and a symbology control
- Tighter integration in Eclipse for Java development and Visual Studio 2005 for .NET users
- Availability of Data Interoperability, Schematics, Maplex™, and Tracking Analyst as optional extensions for ArcGIS Engine

ArcGIS 9.1 users who are current on maintenance will automatically receive ArcGIS 9.2 at no additional cost. ArcGIS users not current on maintenance and/or ArcView® 3.x users should contact Customer Service at 888-377-4575 or visit <http://service.esri.com> for information on how to receive ArcGIS 9.2.



No. GS-35F-5086H